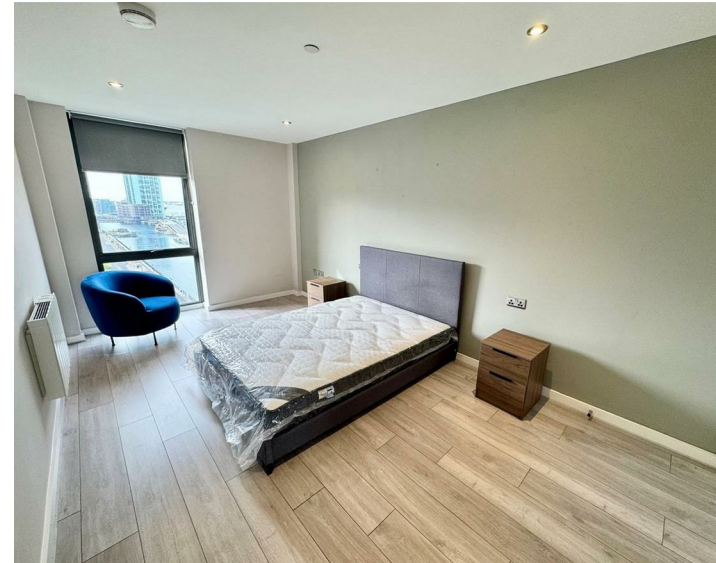




Apt 604, 11, Park Central Jesse Hartley Way, Liverpool, L3
£1,100 Per Month

www.
cityresidential
.co.uk



About the Property

City Residential is delighted to present this stunning 6th-floor, furnished two-bedroom apartment at Park Central – one of Liverpool's premier waterfront developments.

This beautifully designed apartment boasts an open-plan living and dining area, a fully fitted kitchen, two spacious bedrooms (with the master featuring an en-suite), and a family bathroom, offering a perfect blend of style and functionality.

The building is equipped with a lift servicing all floors, ensuring convenience and ease of access. Residents also benefit from access to a first-floor shared communal workspace and a stunning terrace – ideal for enjoying sunny days, fresh air, and breathtaking views of the Mersey and Liverpool's iconic skyline.

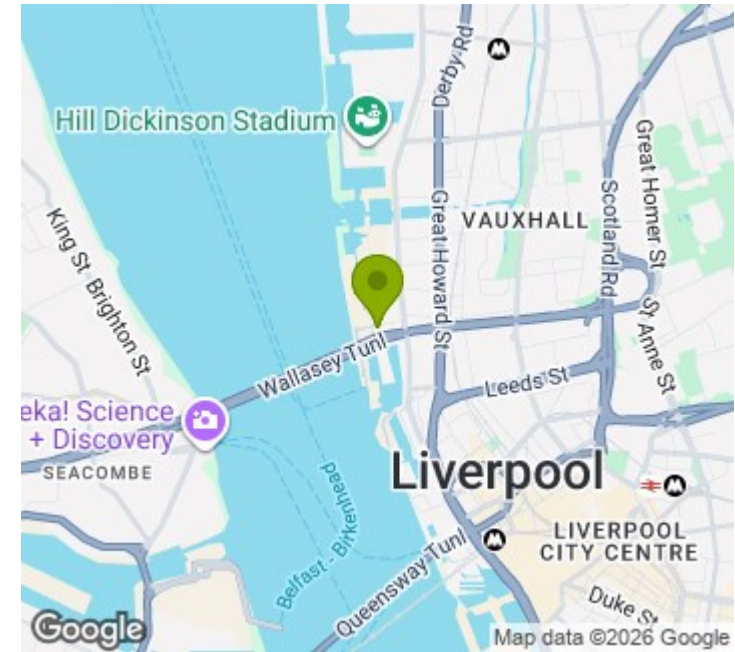
Located just a 10-minute walk from the city centre, Park Central places you within easy reach of shops, bars, restaurants, and all the amenities Liverpool has to offer.

Please Note: No parking is available with this apartment.

Given its prime location and exceptional features, this property is expected to attract significant interest. Early viewing is highly recommended to fully appreciate its quality and appeal.

Don't miss out on this incredible opportunity! Contact City Residential today on 0151 231 6100 to schedule a viewing now!

- River & City Views
- City Centre
- Available Now
- Communal Work Space
- Communal Outdoor Terrace
- Deposit Payable £1269
- Council Tax Band - C
- EPC Rating - B



Energy Efficiency Rating

	Current	Potential
Very energy efficient - lower running costs		
(92 plus) A		
(81-91) B	82	82
(69-80) C		
(55-68) D		
(39-54) E		
(21-38) F		
(1-20) G		
Not energy efficient - higher running costs		
England & Wales	EU Directive 2002/91/EC	



City Residential
81/87 Victoria Street, The Old Haymarket, Liverpool L1 6DG
T: 0151 231 6100 F: 0151 231 6105
E: sales@cityresidential.co.uk



WWW.
cityresidential
.co.uk